



**County of Los Angeles 2025 Floodplain
Management Plan Update
3rd Floodplain Management Plan
(FMP) Committee Meeting
October 1, 2024**

Agenda

- **Introductions**
- **Overview and Comments Received on Draft RLAA Part 2**
- **Overview and Comments Received on Draft FMP Part 2**
- **Public Outreach Status**
- **Next Committee Meeting**
- **Action Items & Next Steps**

What is in the RLAA?

■ Problem Statement

- Description of the area and potential flooding hazards

■ Identified Repetitive Loss Property

- Description of FEMA-designated repetitive loss properties within the area
- Table: Basic information on FEMA-designated properties including previous claims, average cost of claims, if it is mitigated and identified flood cause

Table 19-1: Repetitive Loss Properties in Malibou Lake B Repetitive Loss Area

| FEMA RL # | Flood Dates of Previous Claims | Average Claim Paid | Mitigated? |
|-----------|--------------------------------|--------------------|------------|
| 57972 | 2/80, 2/92, 2/98 | \$6,964 | No |

Identified Flood Cause: Hillside drainage.

What is in the RLAA? (Cont.)

Table 19-2: All Properties in Malibou Lake B Repetitive Loss Area

| Property ID | Number of Insurable Buildings | Building Description | | Probable Mitigation Measures ² |
|-------------|-------------------------------|----------------------|-----------|--|
| | | Foundation | Condition | |
| ML-B1 | 2 | Slab | D4A | Elevation ^a Public education ^{a,b} Local drainage improvements ^a Drainage maintenance ^c |
| ML-B2 | 1 | Slab | D8A | Elevation ^a Public education ^{a,b} Local drainage improvements ^a Drainage maintenance ^c |
| ML-B3 | 1 ³ | Under construction | N/A | Elevation ^a Public education ^{a,b} Local drainage improvements ^a Drainage maintenance ^c |
| Total | 4 | | | |

(a) Property owner action

(b) Public entity action

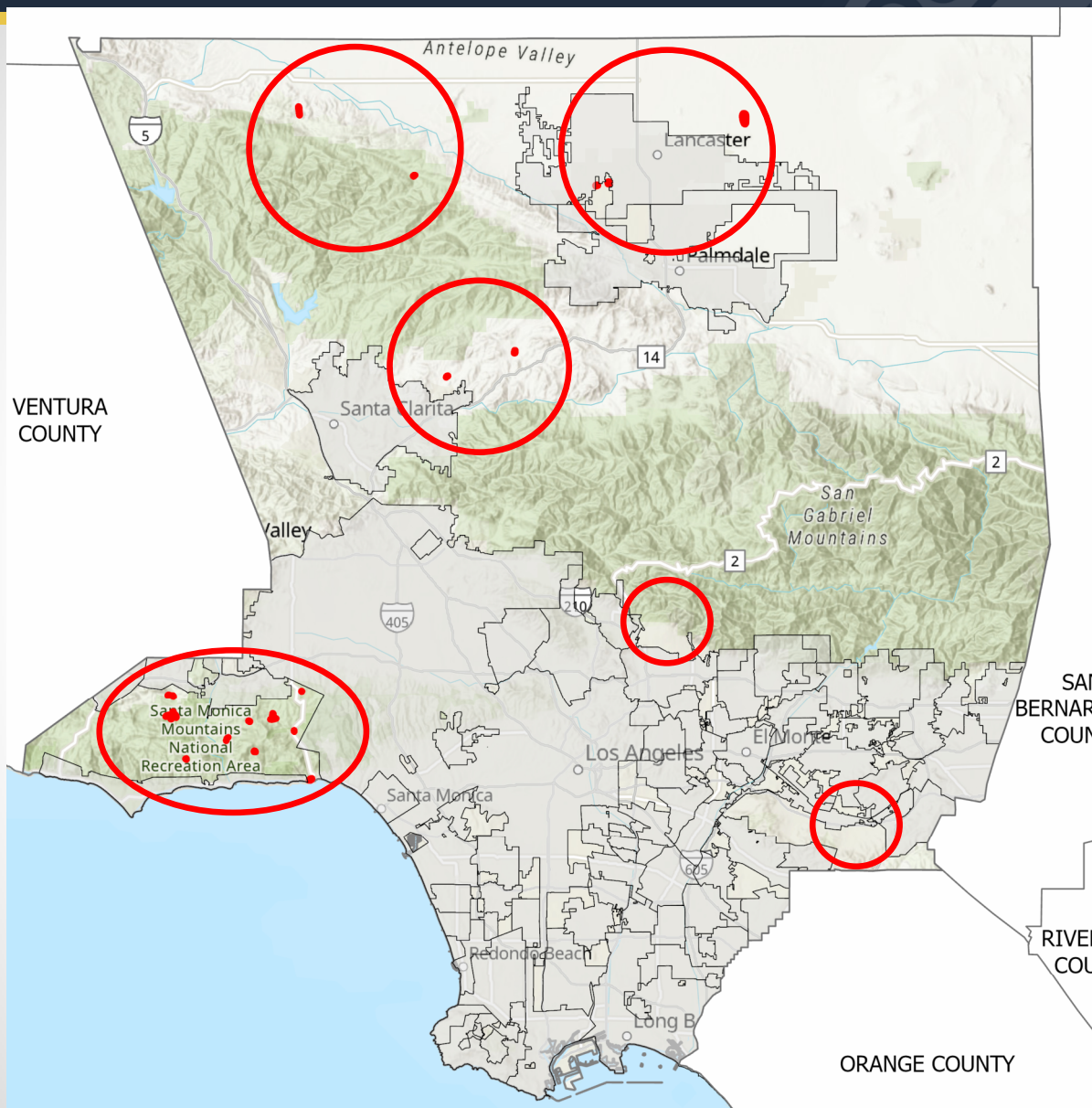
(c) Public entity action for culvert in the public street/road, property owner action for lot drainage

■ Properties Included in Repetitive Loss Area

- Description of the FEMA properties and other properties in the Repetitive Loss Area
- Table: quantitative data of these properties and recommended mitigation measures.
- Part 3 expands on these measures

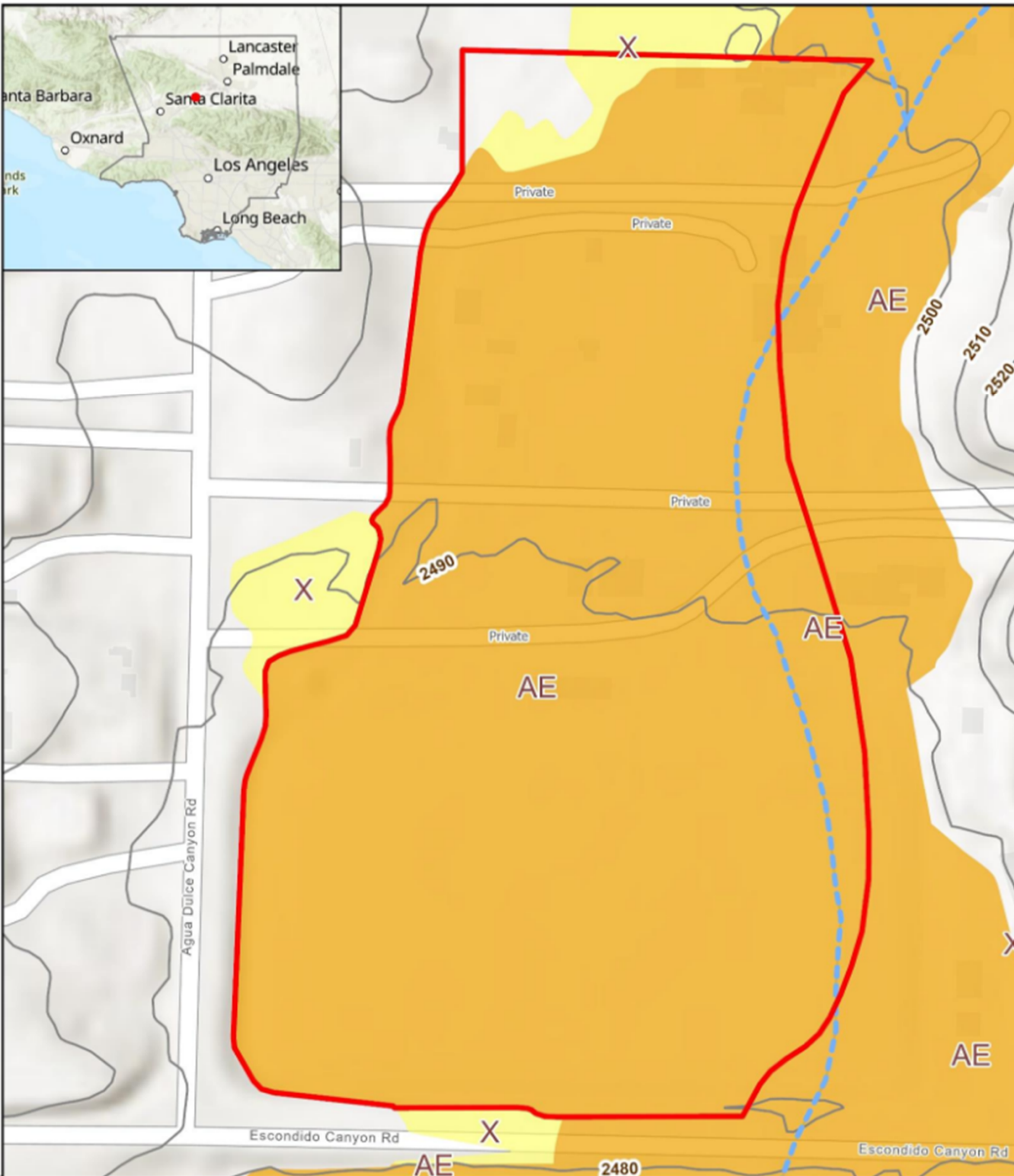
Repetitive Loss Areas

RLAA Part 2



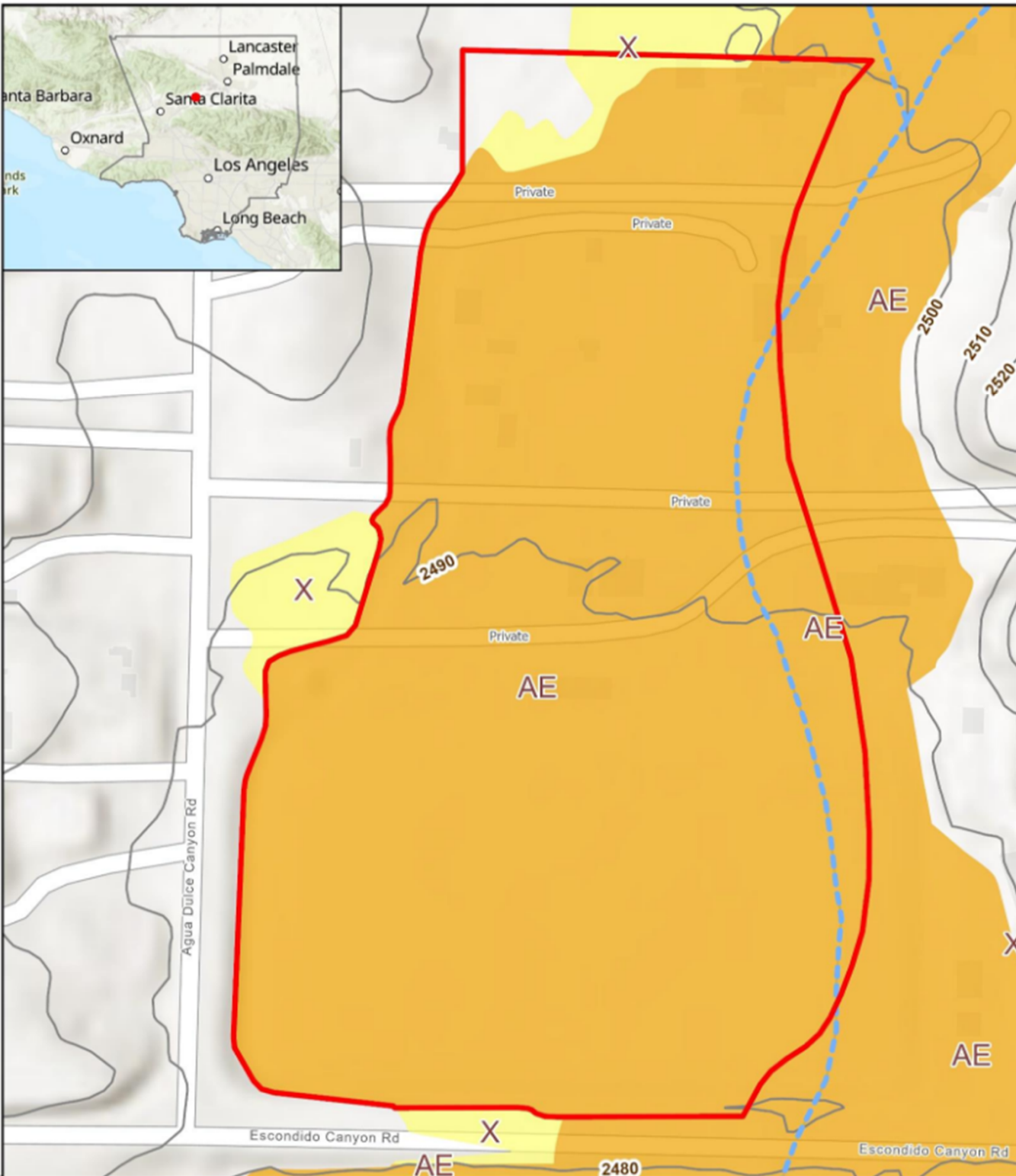
- Identified 28 Repetitive Loss Areas from FEMA Data
- 23 areas had no change
- 4 are new areas, 1 modified area
 - Agua Dulce B
 - Lake Hughes
 - Malibou Lake A
 - Malibou Lake B
 - Topanga Canyon F

Agua Dulce B



- 7 Properties and 15 structures
- Within the floodplain of Agua Dulce Canyon
 - FEMA AE (100-year flood) zone
 - Elevation based on reverse damage function analysis

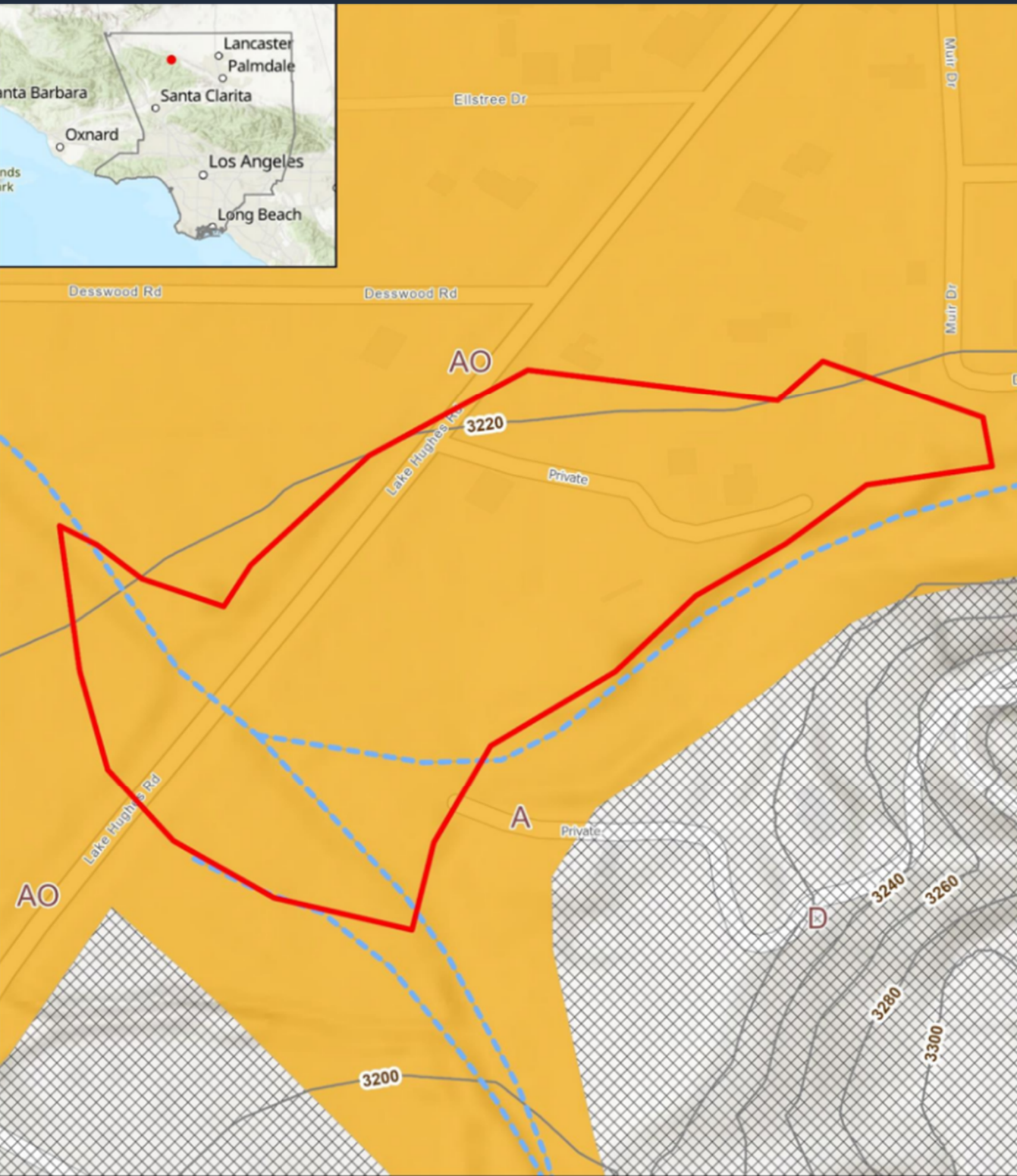
Agua Dulce B



■ Potential mitigation measures

- Drainage system maintenance
- Acquisition
- Elevation
- Public Education

Lake Hughes

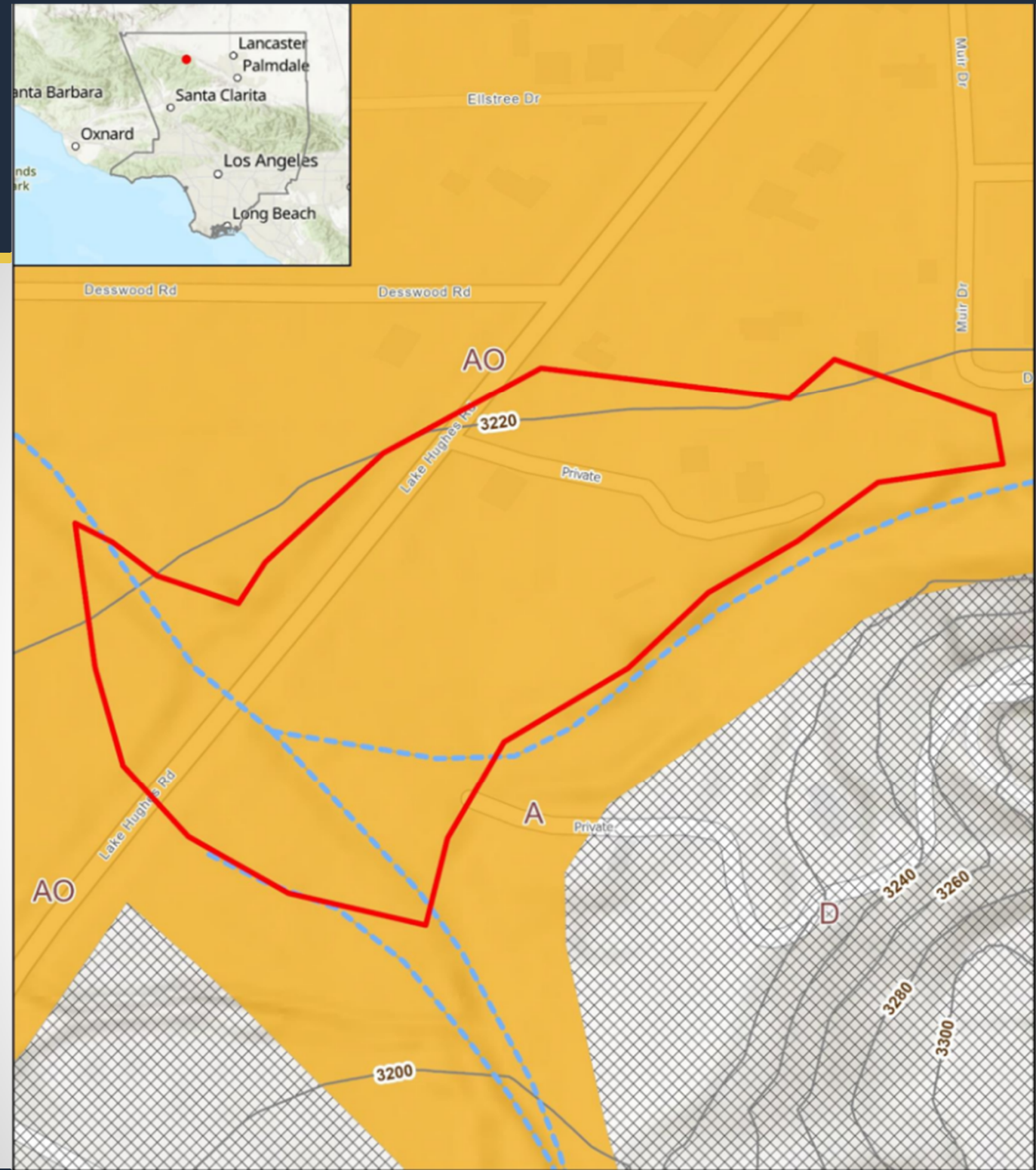


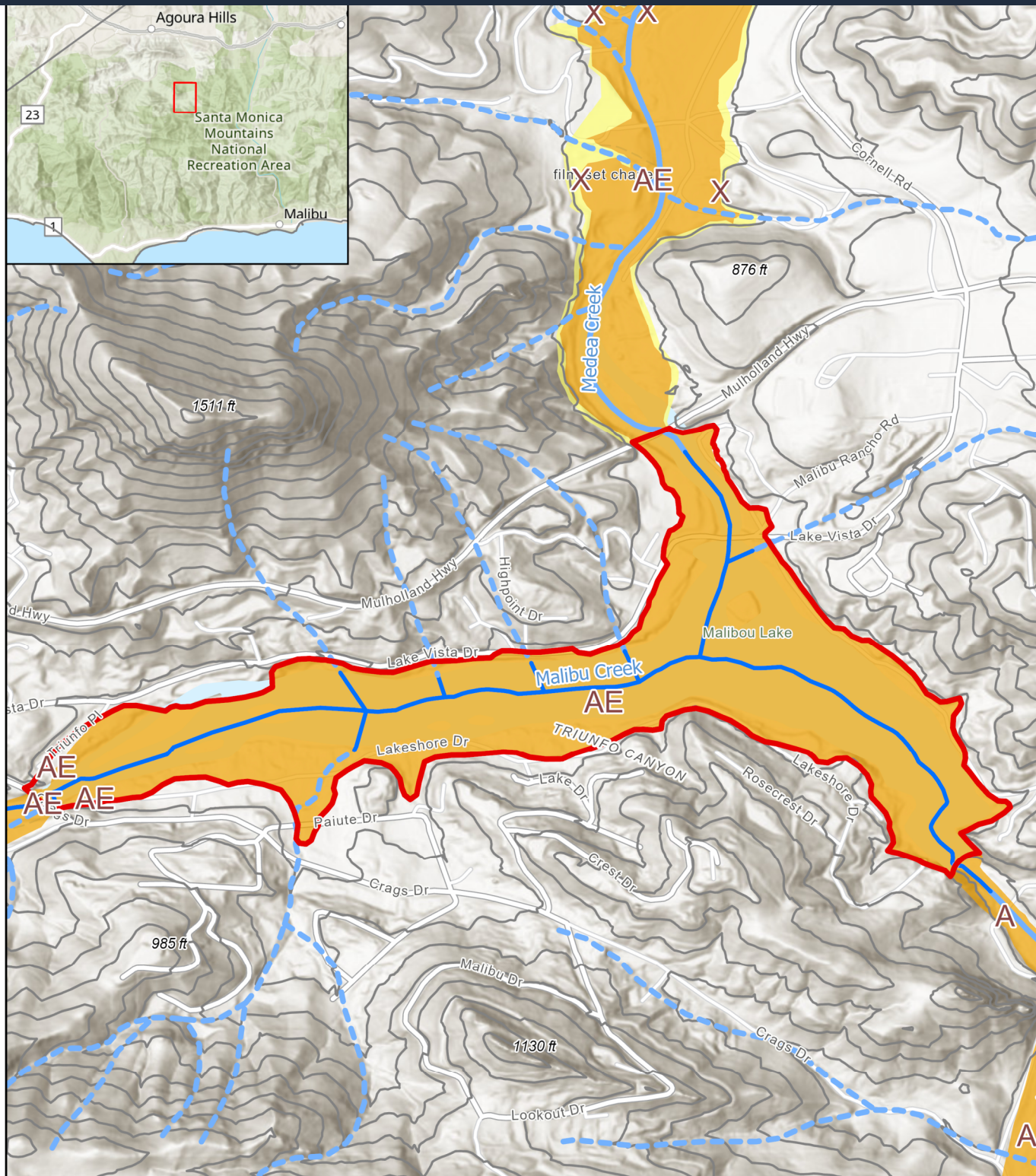
- 6 properties and 10 structures
- Within a FEMA designated floodplain
 - FEMA AO (100-year) zone
 - RLA developed based on reverse function analysis
- Continues downstream to the confluence of two creeks.

Lake Hughes

■ Potential mitigation measures

- Elevation
- Public education
- Local drainage improvement
- Drainage maintenance





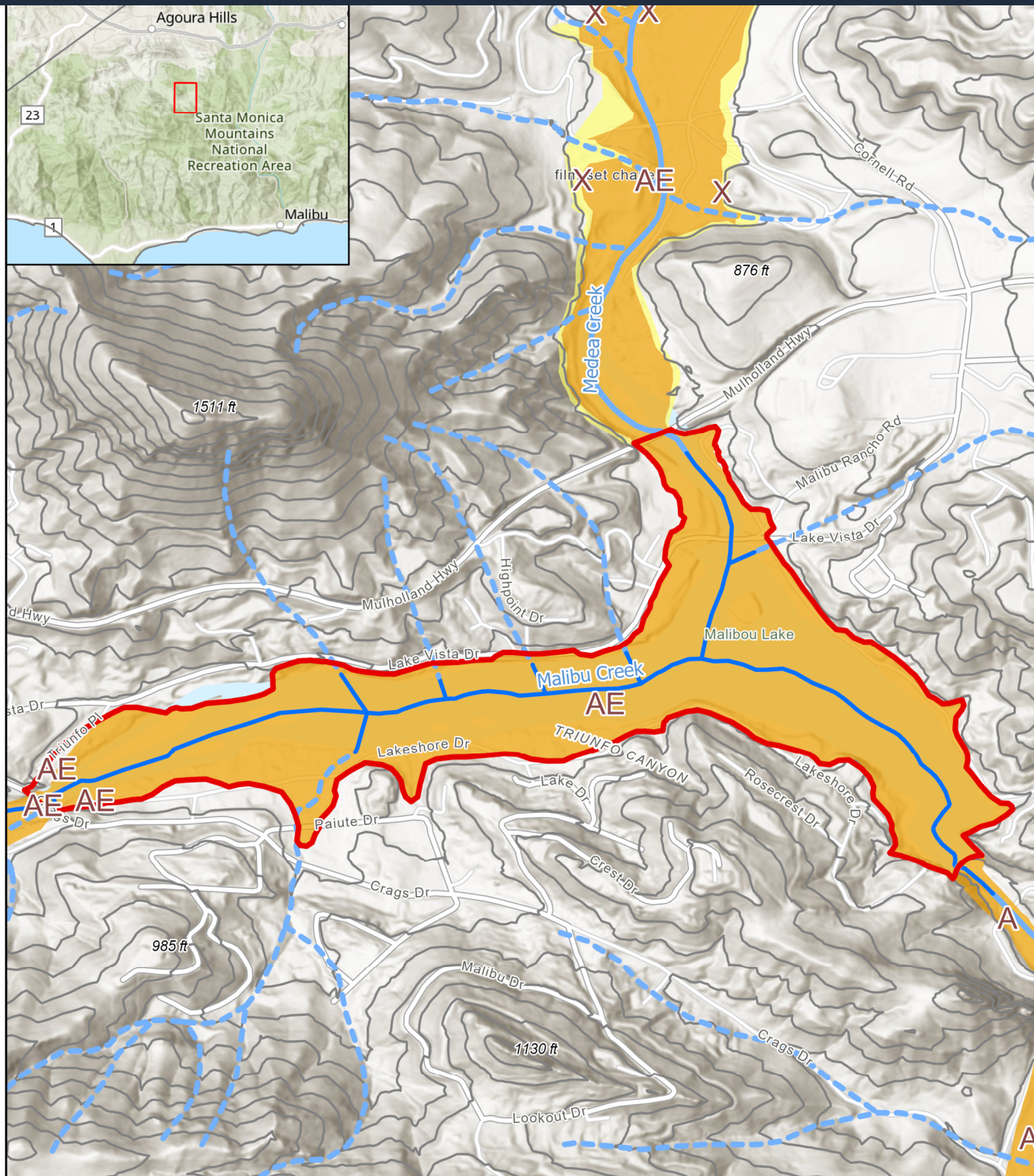
Malibou Lake A

- 56 properties and 58 structures
- RLA was developed in the 2020 FMP
- Within the flood elevation of Malibou Lake
 - FEMA AE (100-year flood) zone
- One new repetitive loss property added to this area

Malibou Lake A

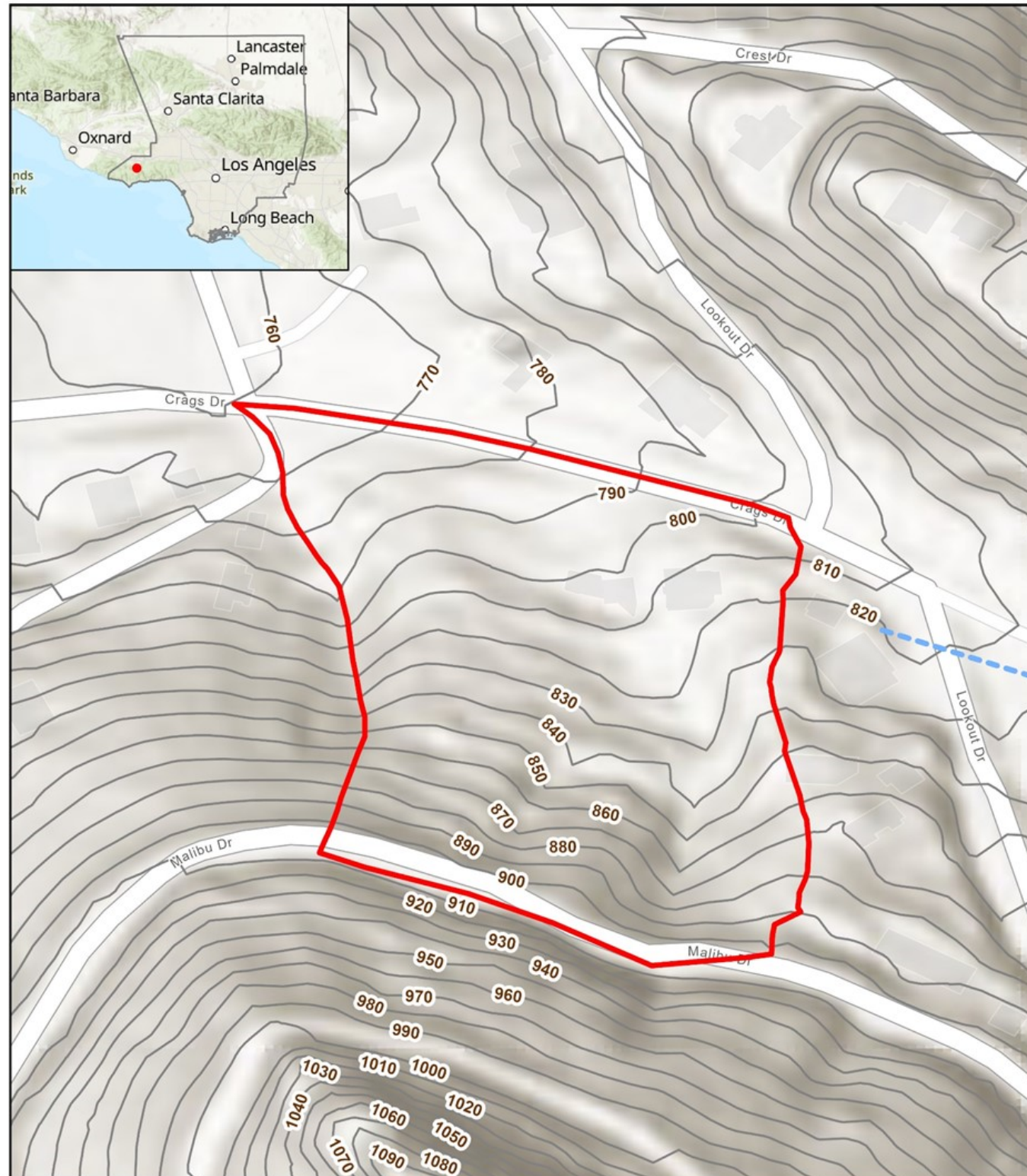
■ Potential mitigation measures

- Elevation
- Acquisition
- Floodwall
- Public education



Malibou Lake B

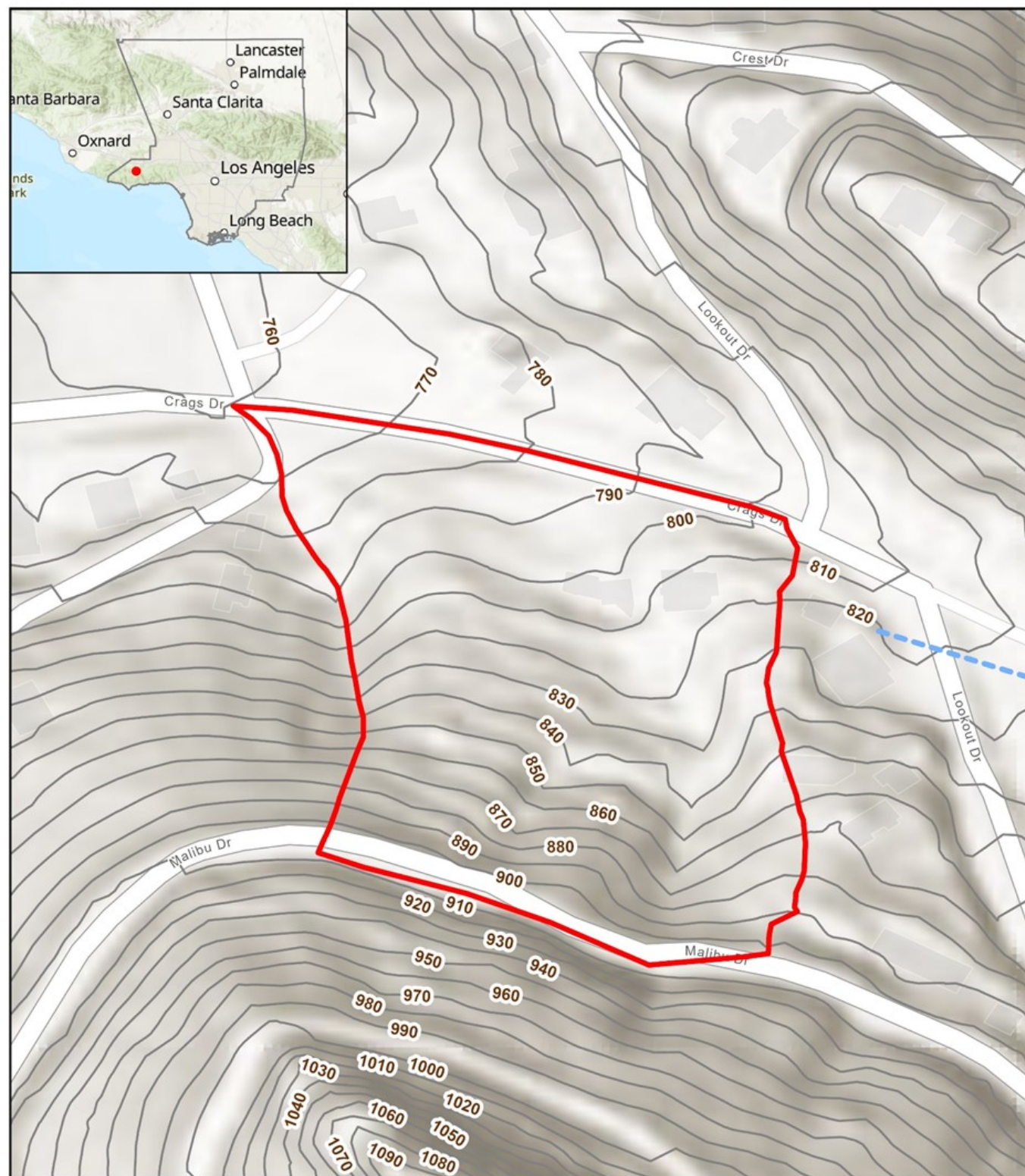
- 3 properties and 4 structures
- Outside of Malibou Lake A RLA
- Developed using topographic information and drainage patterns
- Likely hillside drainage issue



Malibou Lake B

■ Potential mitigation measures

- Elevation
- Public education
- Local drainage improvements
- Drainage maintenance



Topanga Canyon F

- 7 properties and 7 structures
- Not within a FEMA mapped flood zone
- Developed using topographic information and drainage patterns
- Likely hillside drainage issue



Topanga Canyon F

■ Potential mitigation measures

- Create/maintain flow paths to public storm drains
- Drainage system maintenance
- Public Education



Comments Received on RLAA Part 2

- Agua Dulce A: follow up need on private property owner modifications
- Mitigation Measures Table: Regarding the public entity actions, which involve improvements and maintenance, has/have the appropriate agencies been notified? If so, when, what action taken?
- Clarify the responsible party for maintaining offsite drainage and drainage within private property with regard to flooding
- Clarify who would be providing education/outreach outside of the LACFCD
- Clarify current status of Quartz Hill Drainage improvements
- Additional Comments?
- Extension of Review Period: 10/8 (1 week)

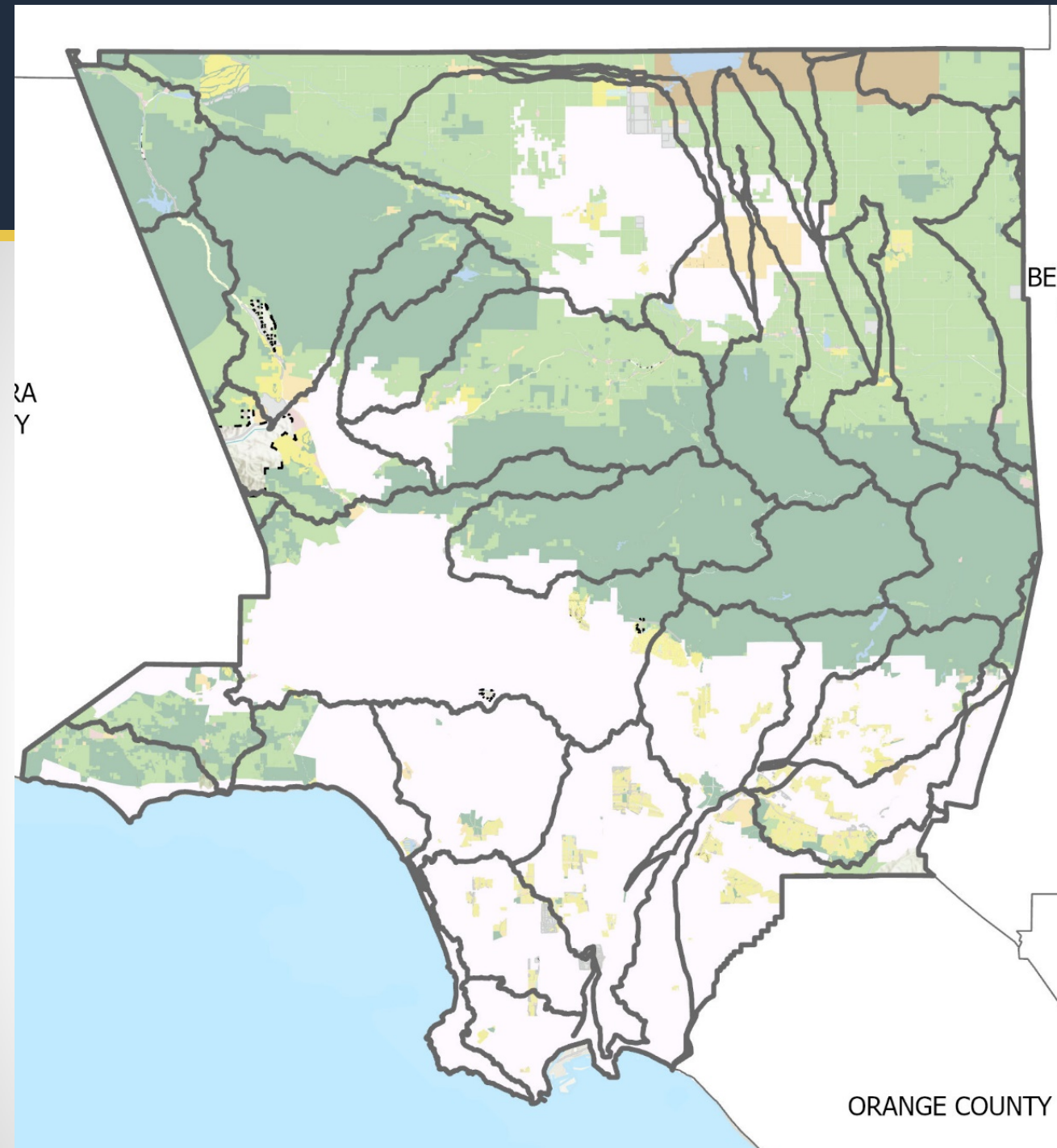
What is in the FMP Part 2?

- **Part 2 sections follow the Community Rating System (CRS) Guidelines for hazard assessment**
 - **Chapter 5- Risk Assessment Methodology**
 - CRS FMP Step 5- page 510-17
 - **Chapter 6- LA County Flood Hazard Profile**
 - CRS FMP Step 4- page 510-15
 - **Chapter 7- Flood Hazard Exposure**
 - CRS FMP Step 5- page 510-16
 - **Chapter 8- Flood Hazard Vulnerability**
 - CRS FMP Step 5- page 510-16
 - **Chapter 9- Climate Change Consideration**
 - CRS FMP Step 4- page 510-15

What is in the FMP Part 2?

- **Results presented in Chapters 7 and 8 address the following CRS scoring criteria**
 - Identify vulnerable populations within the flood zone- public health and safety
 - Identify critical facilities and infrastructure within the flood zones
 - Potential damage to residential, commercial and industrial properties – impact to the community’s economy, major employers and type and number of structures

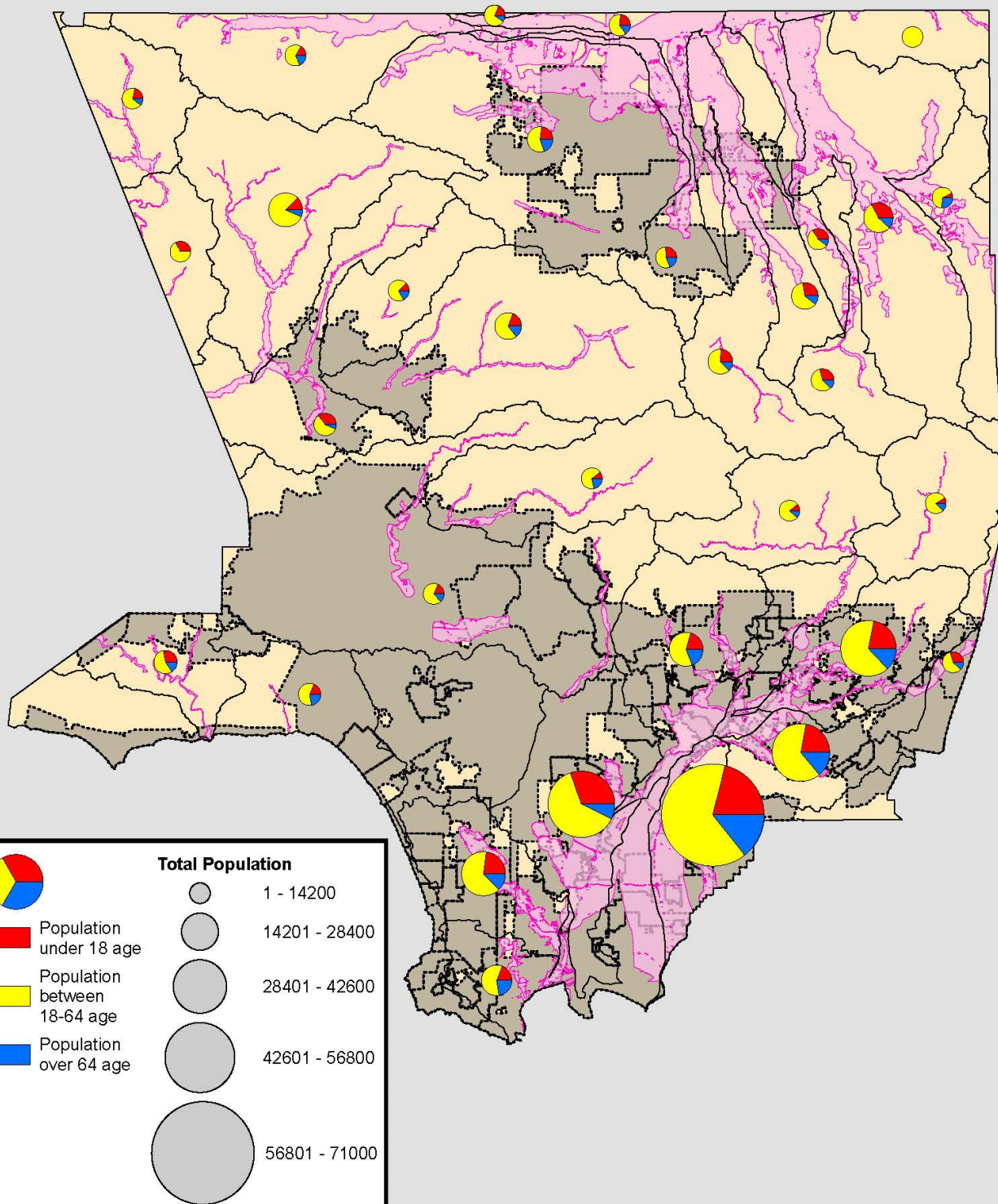
Land Use



■ A visual representation of land use in the Unincorporated County

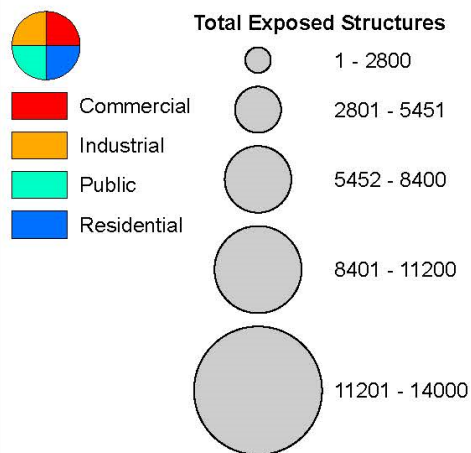
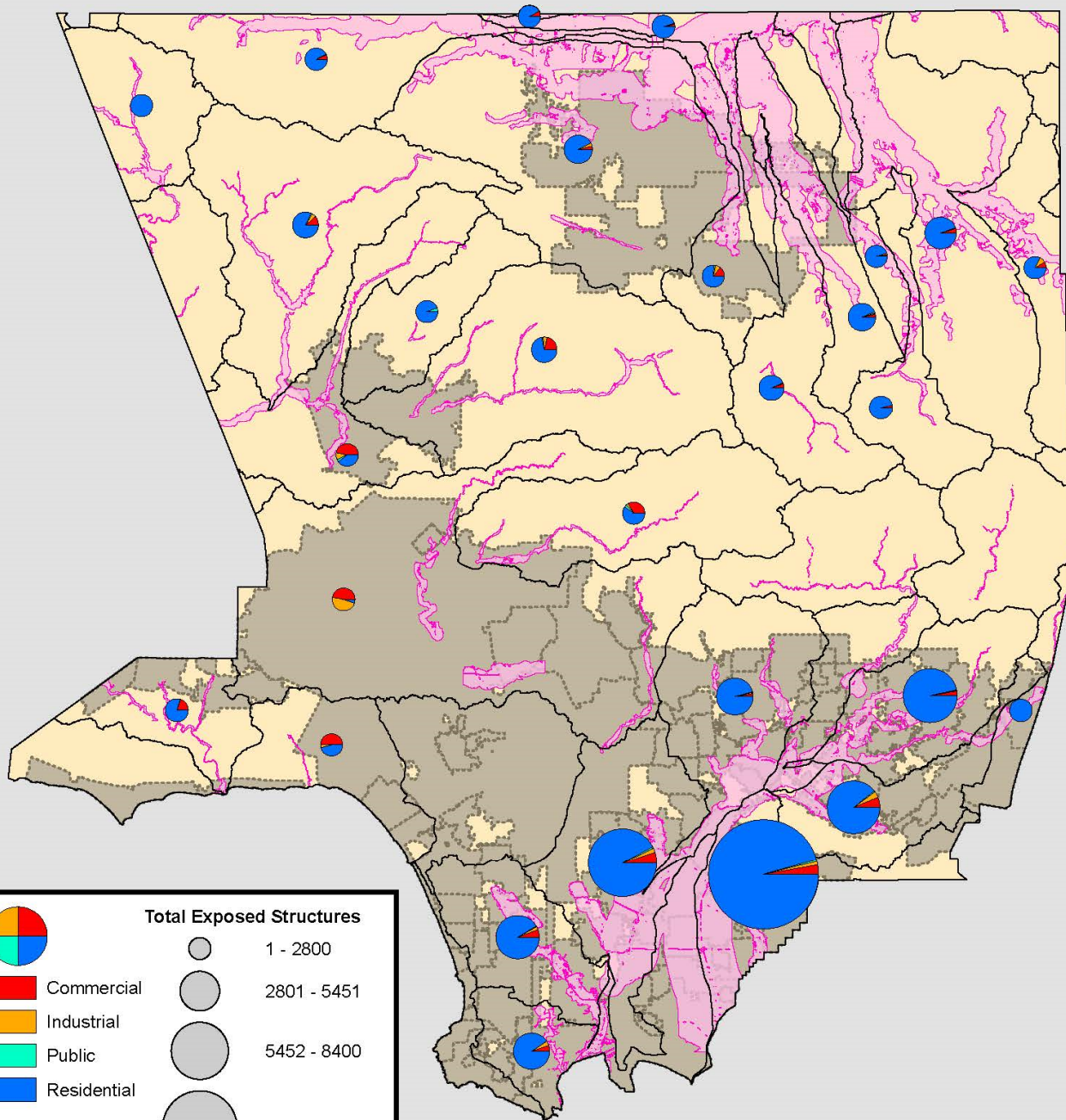
- Primarily rural and open space
- Reason we see a lower affected population and structures in the north county vs the relatively small areas in Southeast Los Angeles County

Potential Impacts to Population



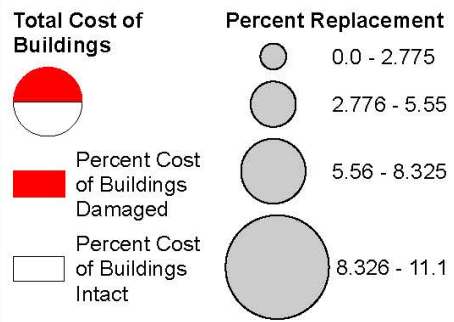
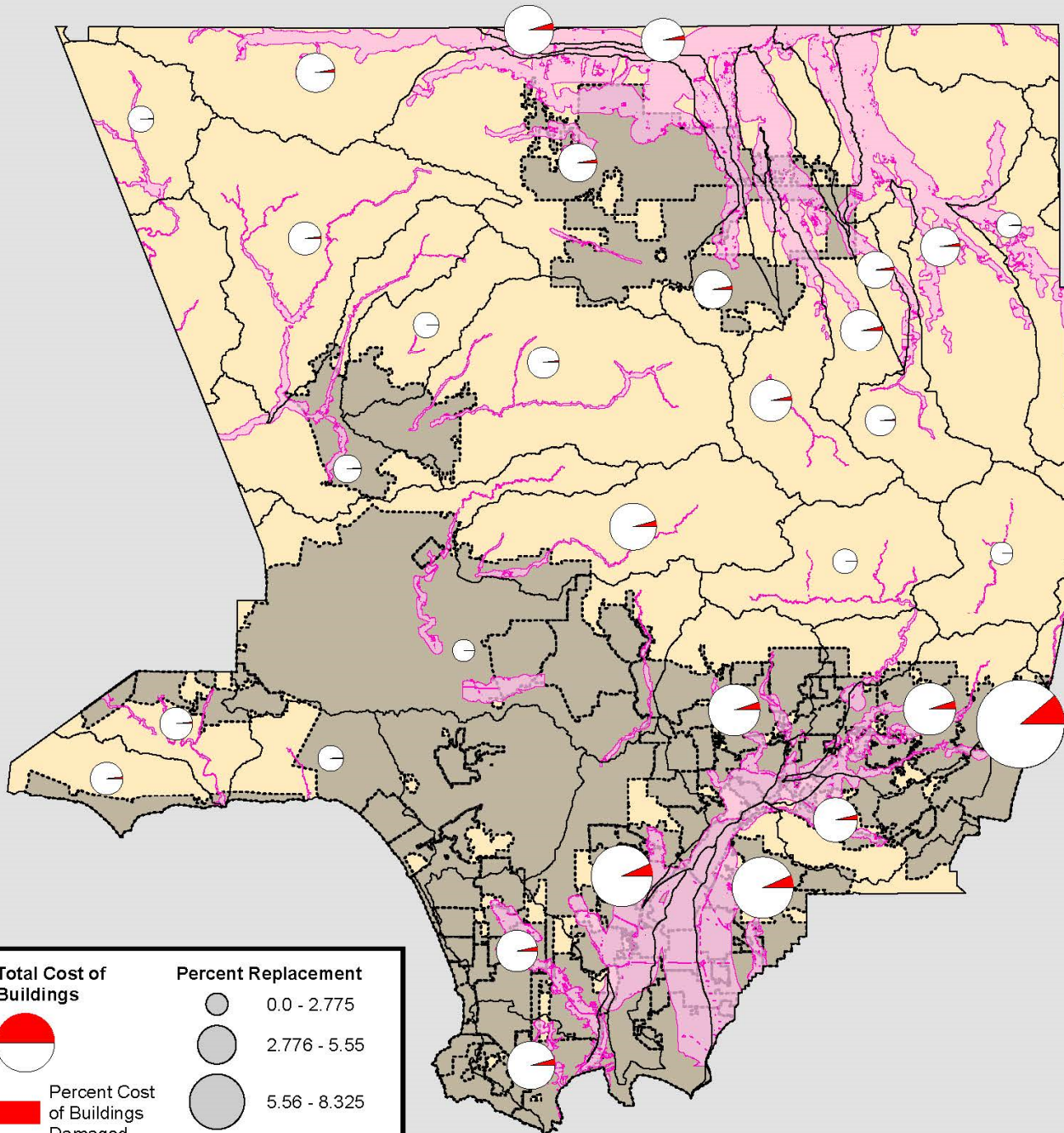
- Population in the 100-year flood zone
- Assessment of vulnerable populations: Considers public health and safety
- Circle size - total number of people exposed within the generated floodplain in each watershed
- Note: the Southeast Los Angeles County area has levees that reduce risk in these watersheds

Potential Impacts to No. of Structures



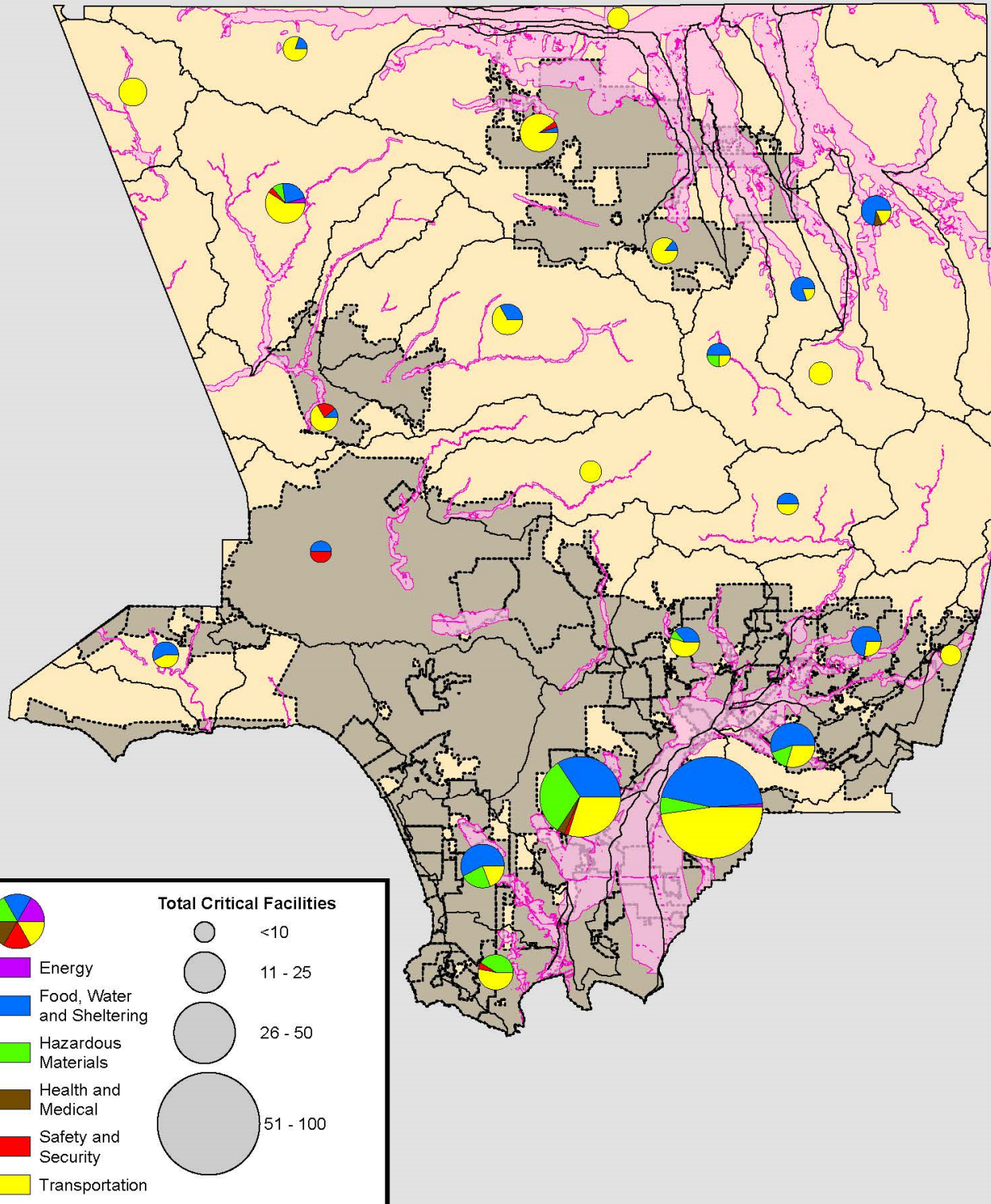
- Structures in the 100-year flood zone
- Assessment of number and type of structures
- Circle size - total number of structures exposed within the generated floodplain in each watershed
- Note: the Southeast Los Angeles County area has levees that reduce risk in these watersheds

Potential Impacts to \$ of Structures



- The costs of structures in the 100-year flood zone
 - Potential impact to the community's economy
 - Circle size - total building cost of exposed structures within the generated floodplain in each watershed
 - Percent replacement - the percent of the total building cost that will need replacement after flood damage
 - Note: the Southeast Los Angeles County area has levees that reduce risk in these watersheds

Potential Impact to No. of Critical Facilities



- **Critical structures in the 100-year flood zone**
 - Potential impact to critical facilities
 - Circle size – number of facilities within the generated floodplain in each watershed
 - Note: the Southeast Los Angeles County area has levees that reduce risk in these watersheds

Concentrated Disadvantage Index

- **Los Angeles County generated CDI with Watersheds Overlayed**
- The index uses a Z-score system to determine 'disadvantaged' areas calculated countywide.
- The Z-score is calculated taking into account
 - the number of children under 18,
 - the population's income levels,
 - need for public assistance,
 - female head of households,
 - and unemployment rates

VENTURA COUNTY

KERN COUNTY

SAN BERNARDINO COUNTY

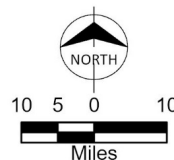
RIVERSIDE COUNTY

ORANGE COUNTY

SAN DIEGO COUNTY

Legend

- Less Disadvantaged than County Average
- County Average
- More Disadvantaged than County Average



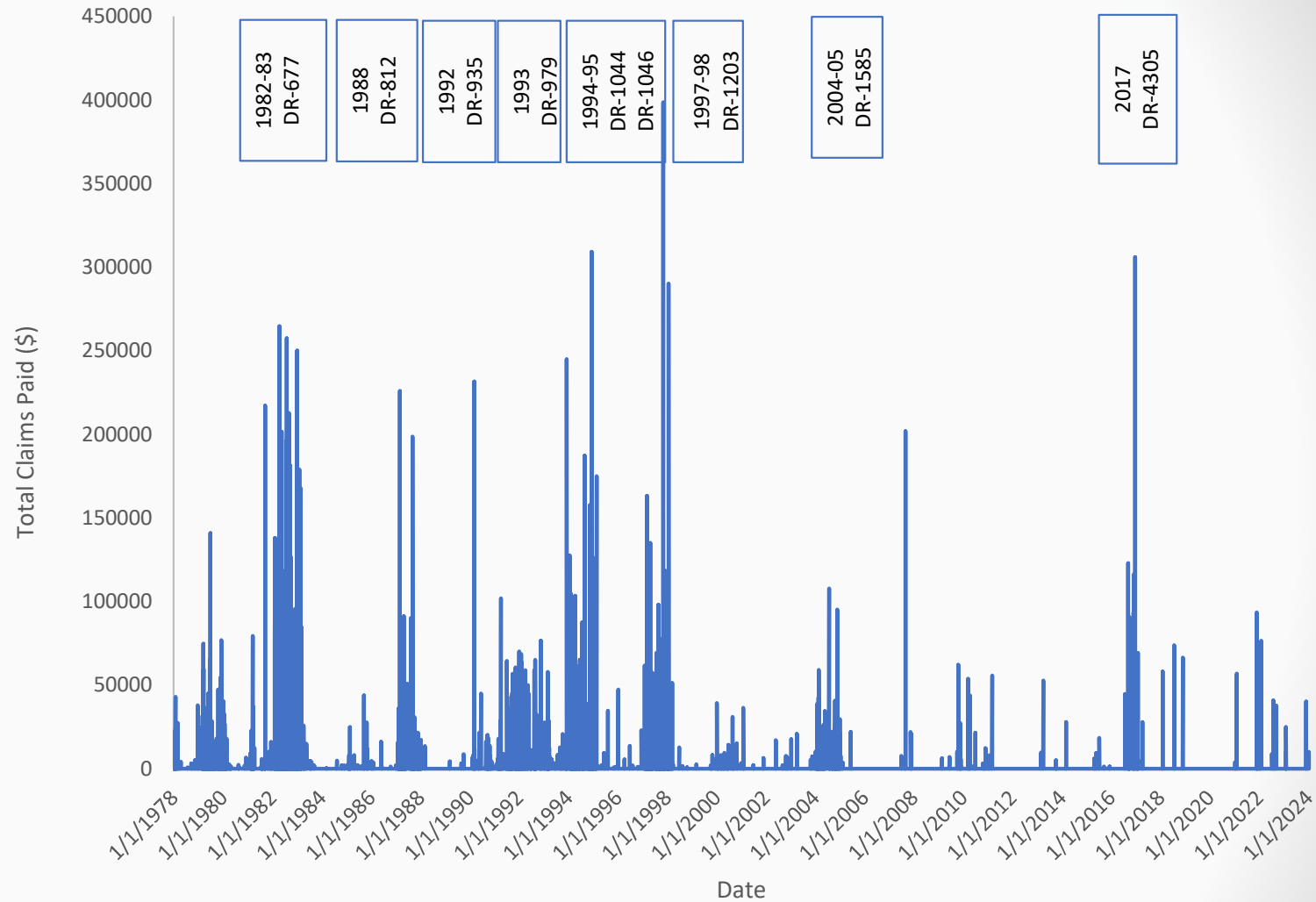
Concentrated Disadvantage Index
Figure 8-1

BURNS MCDONNELL

Issued: 7/22/2024

Graph of Claims Paid Since 1978

- The amount of claims paid since 1978 and the Disaster Declarations corresponding with the peaks



Comments Received on FMP Part 2

- Add the 2004/2005 storm event as well as information about measures following large flood events
- Further discussion on the difference in impacts from flood events to infrastructure (roadways, creek drainage crossings) in Antelope Valley
- Additional Comments?
- Extension of Review Period: 10/8 (1 week)

Community Outreach

- 2nd PPI meeting was held
- Survey Status
- RLAA Notification
- Future Outreach Efforts

Next Steps

- RLAA and FMP Part 3 for FMP Committee review (will be provided two weeks prior to next meeting)
- FMP Committee Meeting tentatively scheduled for **November 12th at from 10am-12**
 - PPI meeting will be scheduled at the same time



THANK YOU FOR YOUR TIME AND
PARTICIPATION!